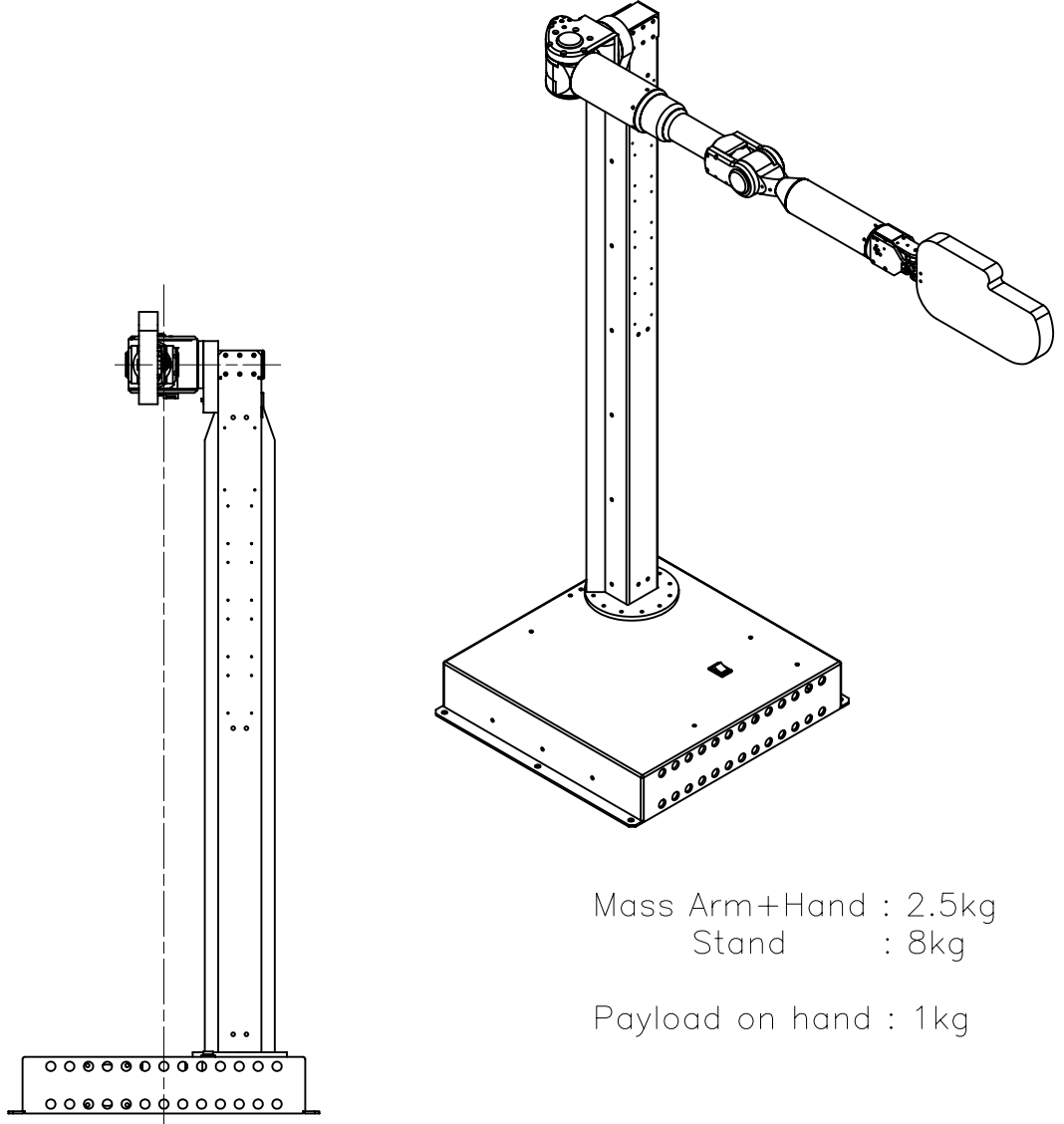
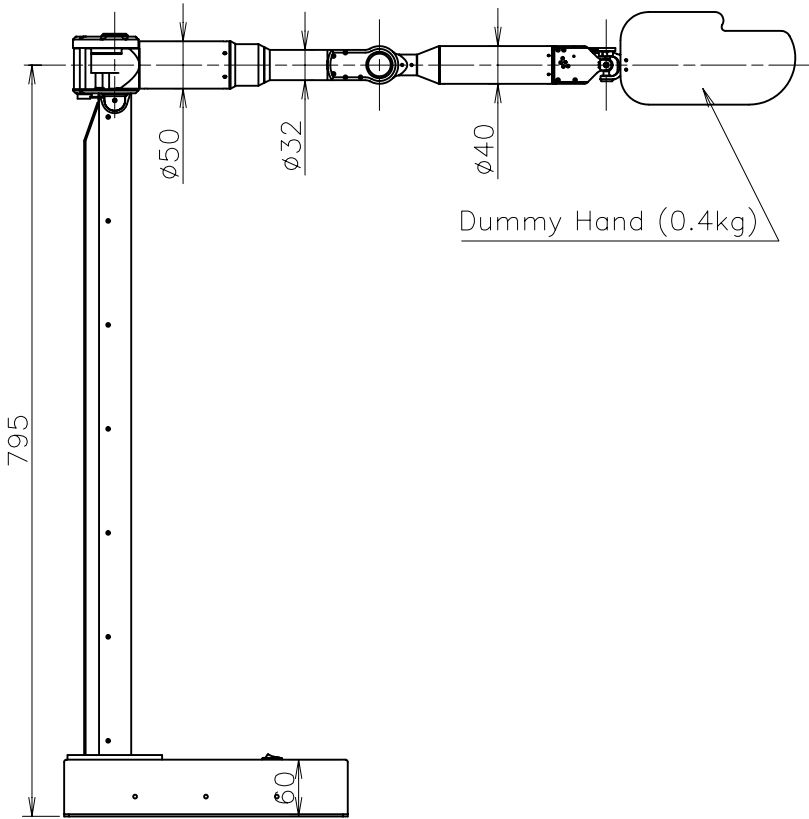
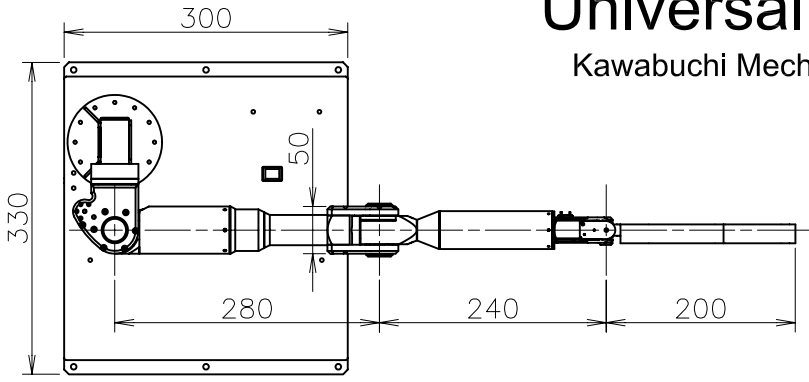


# Universal Humanoid Arm 01

Kawabuchi Mechanical Engineering Lab.,Inc., 2009

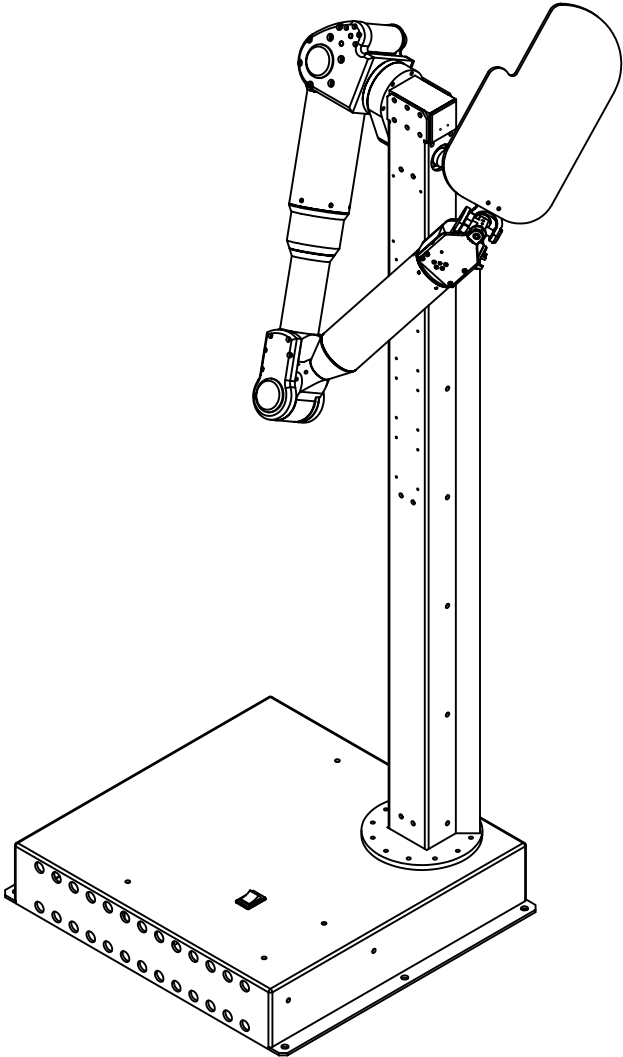
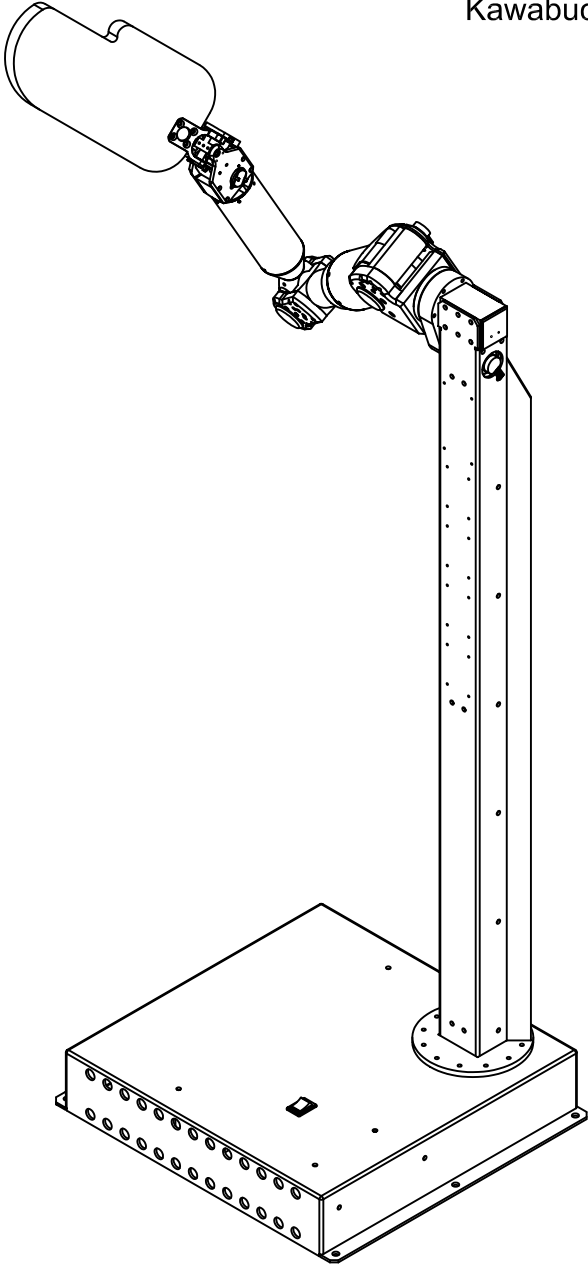


Mass Arm+Hand : 2.5kg  
 Stand : 8kg  
 Payload on hand : 1kg

Designed by	川渕一郎	Scale (A4印刷時)	1/8	Title	Overall View
	<i>TEXART</i>	Date	11/25/09	No.	T_U_18-A01

# Universal Humanoid Arm 01

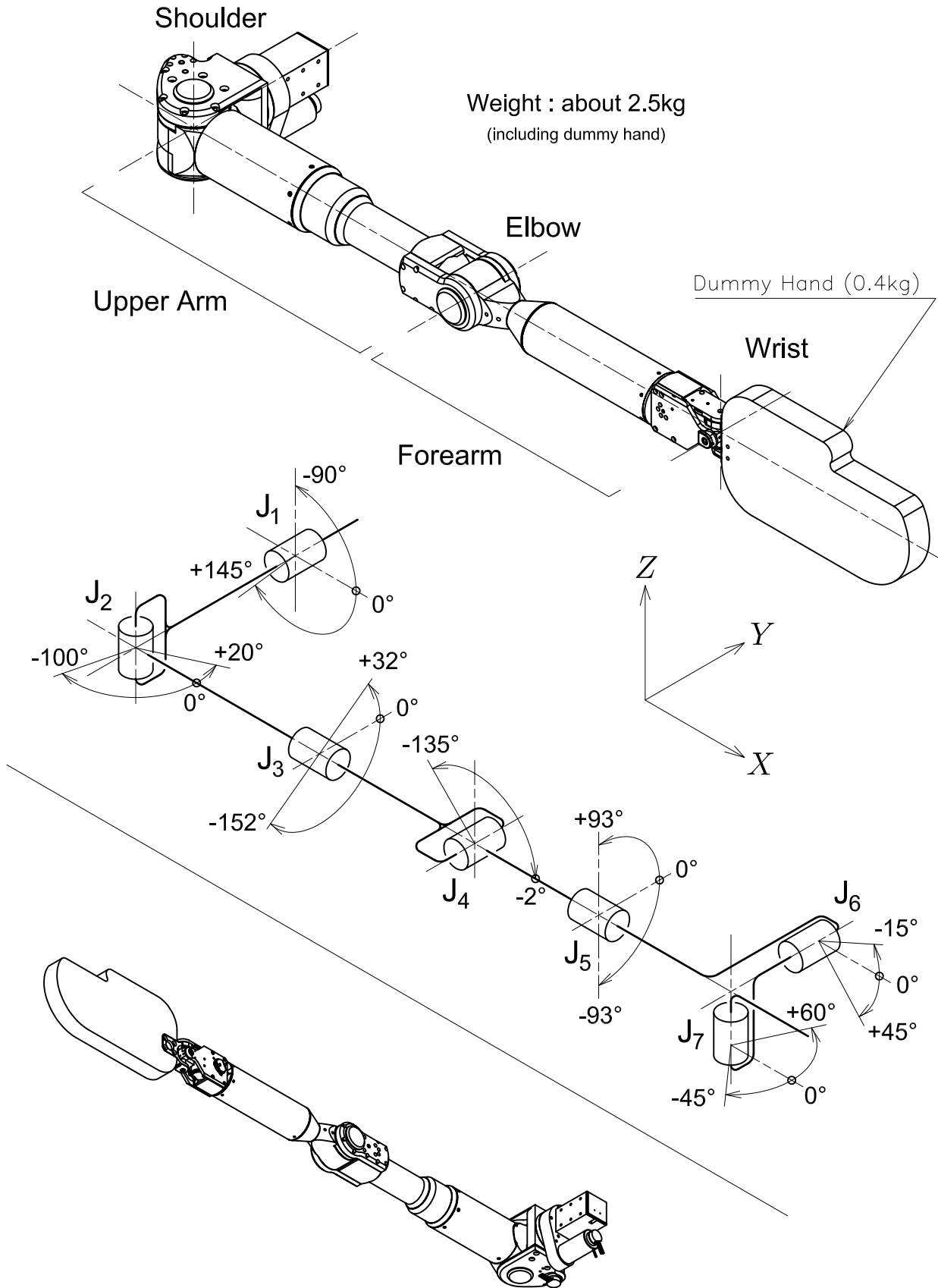
Kawabuchi Mechanical Engineering Lab.,Inc., 2009



Designed by	川渕一郎	Scale (A4印刷時)	4/25	Title	Motions
	<i>TEXART</i>	Date	11/25/09	No.	T_U_18-A02

# Universal Humanoid Arm 01

Kawabuchi Mechanical Engineering Lab., Inc., 2009



[Note]

Definition of joints and their motions of the right arm.

Orientation when all joint angular displacements are 0 is shown.

Designed by Dr. Ichiro KAWABUCHI	Scale — / —	Title Right Arm Definition
<i>TEXART</i>	Date 11/25/09	No. T_U_18-A03R